



OPERATING INSTRUCTIONS | AMP+DAC5

ELEMENT IV

SUPPORT

ONLINE

CONTACT@JDSELABS.COM
[JDSELABS.COM/SUPPORT](https://www.jdslabs.com/support)

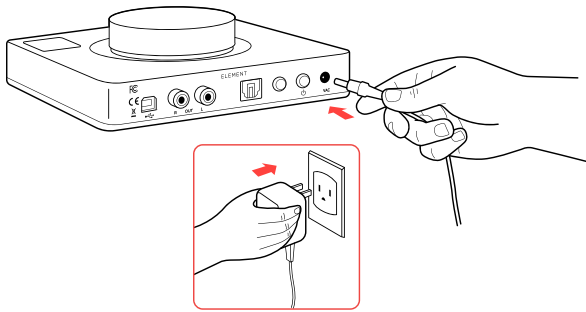
BY PHONE

314-252-0936
9:00AM-5PM CST, MONDAY
THROUGH FRIDAY

BY MAIL

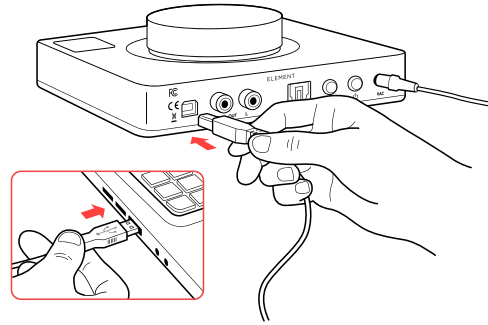
909 N BLUFF RD
COLLINSVILLE, IL 62234
UNITED STATES

QUICK SETUP



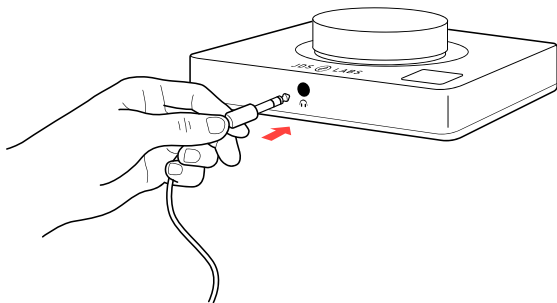
STEP 01

Connect AC power adapter to rear power jack (16VAC), then connect to wall outlet.



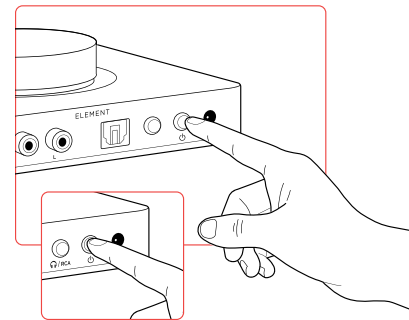
STEP 02

Connect USB cable between your computer and the USB jack.



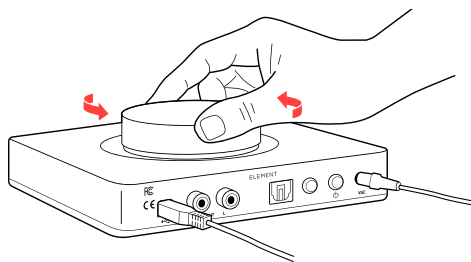
STEP 03

Connect headphones to the front headphone output jack.



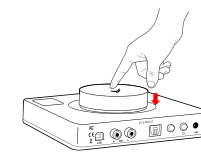
STEP 04

Pressing the Power button turns Element on or off.



STEP 05

Slowly raise the volume knob to an appropriate listening level. See *Listening Tips* on page 7.



Pressing the volume knob toggles between USB and Optical input.

Please see *Connectivity and Computer Setup* for additional help.

CONFIGURATION

Automatic Gain

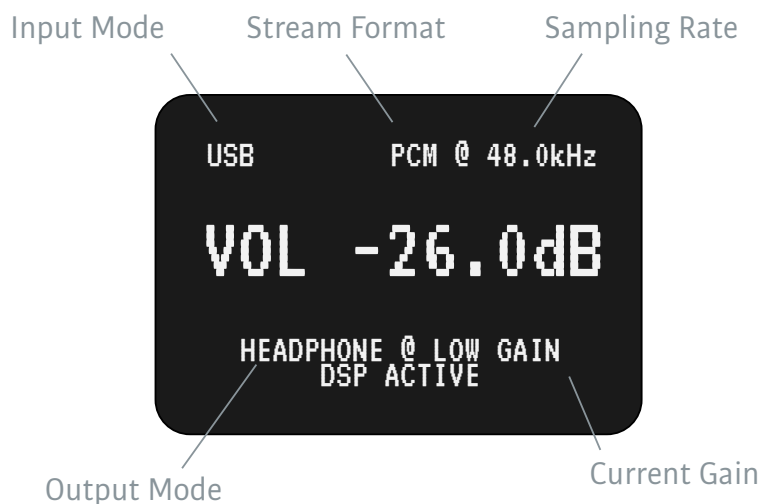
Element IV handles audio logic for a blissful experience, automatically toggling the optimal gain state as you adjust volume. No thought is required on your part. Enjoy!

Low Gain is always active at volume levels from -127.5 to 0 dBFS. Continuing to turn the knob beyond 0 dB presents an on-screen progress bar, signifying a pending transition to High Gain. Element IV automatically adjusts volume for a pleasant transition between gain states. You will see an effective volume range of 0 to 14 dB in High Gain.

Please observe safe listening habits under Listening Tips. Typical listening levels range from -50 dB to -20 dB for most dynamic and planar headphones, depending on your music collection and preferences. For IEMS, expect to listen below -50 dBFS.

Display

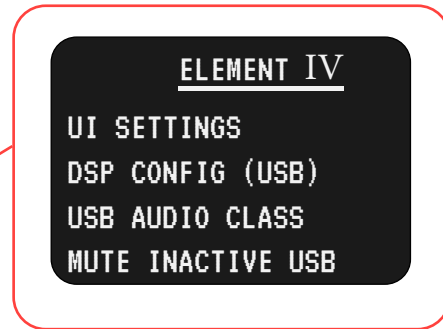
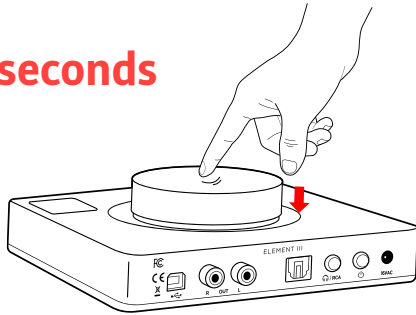
Element IV displays status information while you interact, then vanishes so that your focus remains on listening.



OPTIONS MENU

Settings

Press for 3+ seconds



Pressing down on the Volume Knob for 3+ seconds enters the Options Menu. Turn the knob to navigate up/down the options menu. Push the knob to make a selection.

For best experience, we recommend adjusting settings through Core. You will find up-to-date descriptions of each option and feature within Core.

Core™

Core provides access to every setting available in Element IV, including graphical control of its 10-band parametric EQ. Visit core.jdslabs.com from a supported desktop browser:

- Chrome
- Edge
- Opera
- Brave
- Firefox with [WebSerial for Firefox](#)

Connectivity

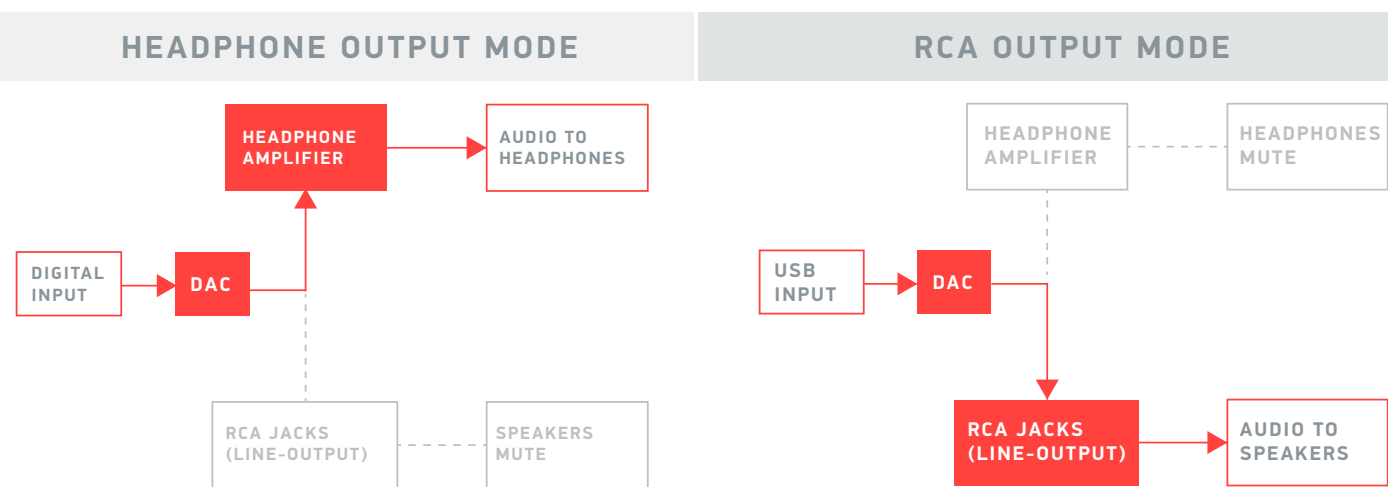
Inputs

Element IV accepts digital input via USB or S/PDIF (optical). Press the rear mode button to toggle between USB or optical input.

Outputs

Element IV provides headphone output and RCA Preamp Outputs. Press the tactile Volume knob button to toggle between output modes. Only one output is active at a time. Volume is adjustable in either mode, and saved to memory for easy transitions.

Pressing an input or output button displays the current mode on the screen.



USB Cables

Element IV ships with a 3ft (1m) USB Type C to A cable equipped with a ferrite core for optimal jitter and noise rejection.

Longer cables can be used, but may increase jitter or compromise connection quality. If you must use a longer USB cable, we strongly encourage the following practices:

- 1) Transfer the detachable ferrite from your JDS Labs cable to your new cable. Use the exact same position on the new cable.
- 2) For runs longer than 6ft, use a USB hub or **Synapse** and two shorter cables (one 6ft cable to the hub, and the other 6ft cable to your DAC).

Listening Tips

Set sampling rate to the highest integer multiple of your music collection. For example, use 192kHz for a collection of 48k and 192k audio files. Common streaming services and games tend to use 48kHz audio. Alternatively, you may install the optional XMOS drivers in Win 10/11 and use an ASIO capable app to achieve bitperfect sampling rate changes. Active sampling rate is displayed on Element IV's screen.

Element IV can amplify headphones to dangerously loud audio. Listen safely to conserve your hearing:
www.hearingloss.org

By default, Element IV disables host operating volume controls for maximum fidelity and plentiful D/A headroom. Note: Win 10/11 may still permit system level volume adjustments.

Operating Care

Element IV uses a high current power supply and runs warm to the touch. Avoid covering the top and sides.

Element IV can be safely powered on 24/7, or you may power down.

To ensure an optimal noise floor, always position headphone amplifiers as far away as possible from WiFi routers.

SETUP

Computer Setup

Element IV requires no drivers in Windows 10/11, macOS, Linux, and modern versions of iOS or Android. You may optionally download drivers for Windows at jdslabs.com/drivers to enable all bitrates, adjust Buffer Length (latency), and to enable an ASIO endpoint. Be sure to select your new DAC as the default playback device:

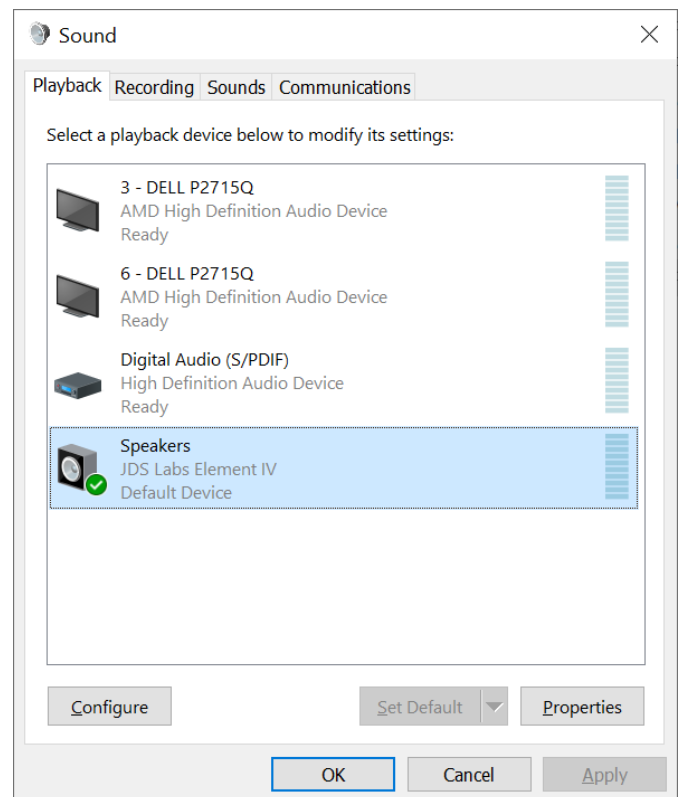
Windows 10/11

1. Right click the volume icon in your taskbar:
Open Sound Setting → **Sound Control Panel**
2. Click on *JDS Labs Element IV* and then choose **Set Default**.

Please refer to Listening Tips on previous page for optimal settings. **For Windows 11, we recommend setting sampling rate to 192 kHz.**

macOS

Ensure JDS Labs Element IV is selected from Audio Devices.



Troubleshooting

Does not turn on

Cause: Missing, damaged, or loose power adapter.

Solution: Please see jdslabs.com/troubleshooting

LEDs flash repeatedly when turned on

Cause: Flashing LEDs indicates no response from the main processor despite internal reset attempts. This may be caused by catastrophic power or water damage, for example.

Solution: Please turn Element IV off, and then back on. If behavior persists, please reach out to jdslabs.com/support

No response from volume knob or buttons

Cause: Extreme local interference or severe USB communication errors

Solution: Turn Element IV off, and then back on. If behavior occurs intermittently, try repositioning amplifier further away from large monitors; try another USB cable and another USB port; avoid docks; set to Headphone Mode and/or power down when away.

DAC restarts during use

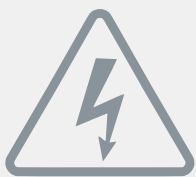
Cause: Element IV is designed to detect and recover from power & communication errors.

Solution: Ensure clean power is provided. Avoid placing near sources of excessive RF noise such as WiFi routers or the power entry point of large monitors; try another USB cable.

No sound from headphones

Cause: Wrong mode or incorrect connectivity setup.

Solution: Please see the Connectivity section. Double check all cabling and volume levels.



Power Adapters

ATTENTION: Incorrect power adapters can result in capacitor explosion hazards and device damage. Only use the power adapter included with your Element:

Type: AC-to-AC Transformer	Full Load Voltage: 17 VAC
Current: Minimum 1400mA	Connector: 2.1x5.5 mm (ID x OD)



Application for Council Directives 2004/108/EC, 2006/95/EC, 2002/95/EC. Conformity declared for EN55022:2011, EN611000-3-2, EN61000-3-3, EN55024-2



This equipment has been tested and found to comply with the limits for a Class B digital device, pursuant to part 15 of the FCC Rules.