



---

OPERATING INSTRUCTIONS | AMP+DAC5

# ELEMENT IV

## SUPPORT

ONLINE

---

[CONTACT@JDSELABS.COM](mailto:CONTACT@JDSELABS.COM)  
[JDSELABS.COM/SUPPORT](https://www.jdslabs.com/support)

BY PHONE

---

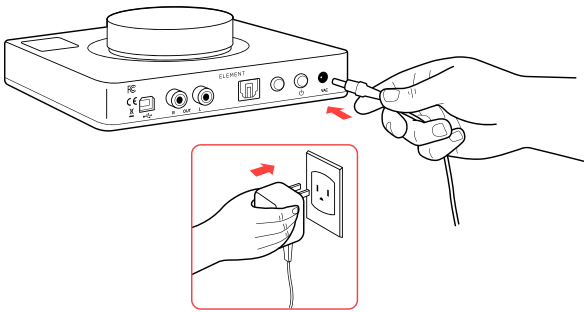
314-252-0936  
9:00AM-5PM CST, MONDAY  
THROUGH FRIDAY

BY MAIL

---

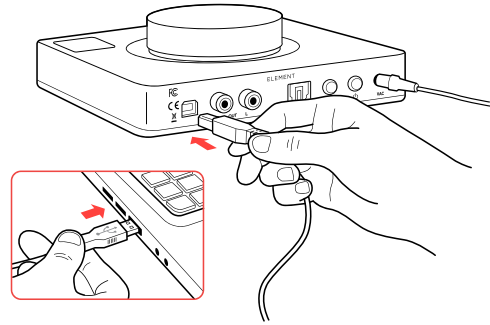
909 N BLUFF RD  
COLLINSVILLE, IL 62234  
UNITED STATES

# QUICK SETUP



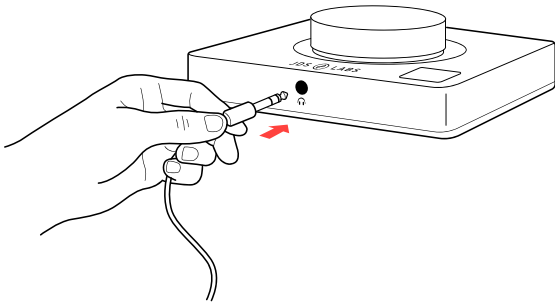
## STEP 01

Connect AC power adapter to rear power jack (16VAC), then connect to wall outlet.



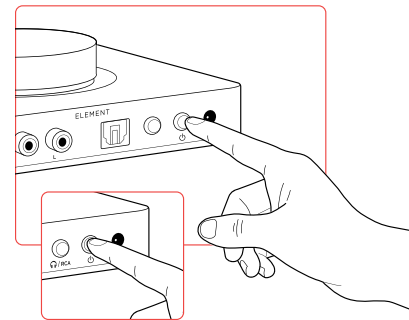
## STEP 02

Connect USB cable between your computer and the USB jack.



## STEP 03

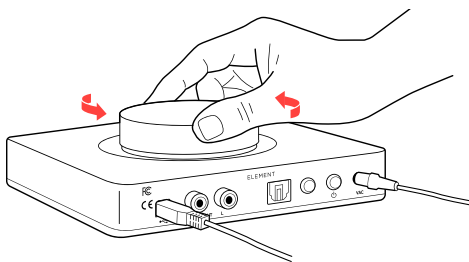
Connect headphones to the front headphone output jack.



## STEP 04

Pressing the Power button turns Element on or off.

Pressing the Headphone/RCA button toggles between headphone or RCA Output modes.



## STEP 05

Slowly raise the volume knob to an appropriate listening level. See *Listening Tips* on page 7.



Pressing the volume knob toggles between USB and Optical input.

Please see *Connectivity and Computer Setup* for additional help.

# CONFIGURATION

## Automatic Gain

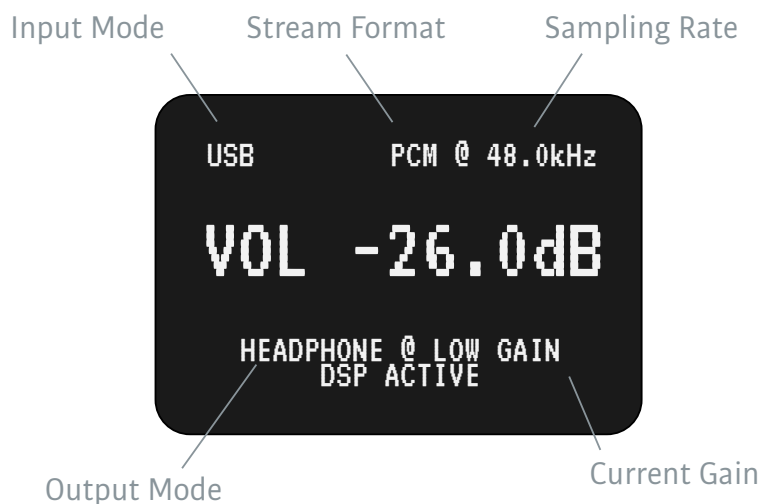
Element IV handles audio logic for a blissful experience, automatically toggling the optimal gain state as you adjust volume. No thought is required on your part. Enjoy!

Low Gain is always active at volume levels from -127.5 to 0 dBFS. Continuing to turn the knob beyond 0 dB presents an on-screen progress bar, signifying a pending transition to High Gain. Element IV automatically adjusts volume for a pleasant transition between gain states. You will see an effective volume range of 0 to 14 dB in High Gain.

Please observe safe listening habits under Listening Tips. Typical listening levels range from -50 dB to -20 dB for most dynamic and planar headphones, depending on your music collection and preferences. For IEMS, expect to listen below -50 dBFS.

## Display

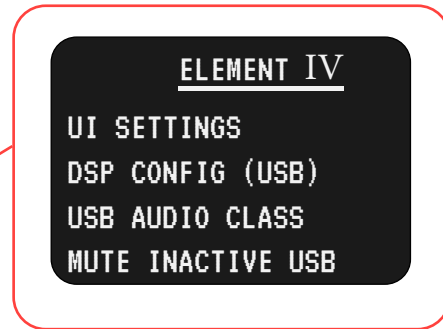
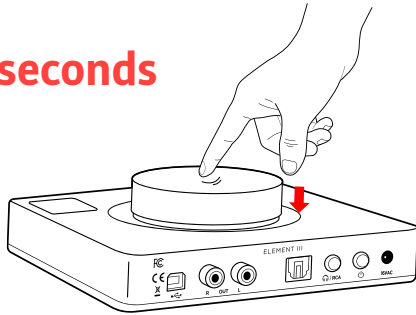
Element IV displays status information while you interact, then vanishes so that your focus remains on listening.



# OPTIONS MENU

## Settings

**Press for 3+ seconds**



Pressing down on the Volume Knob for 3+ seconds enters the Options Menu. Turn the knob to navigate up/down the options menu. Push the knob to make a selection.

For best experience, we recommend adjusting settings through Core.

## Core

Core provides access to every setting available in Element IV, including its 10-band parametric EQ. Visit [core.jdslabs.com](https://core.jdslabs.com) from a supported desktop browser:

- Chrome
- Edge
- Opera
- Brave
- Firefox with WebSerial for Firefox

# Connectivity

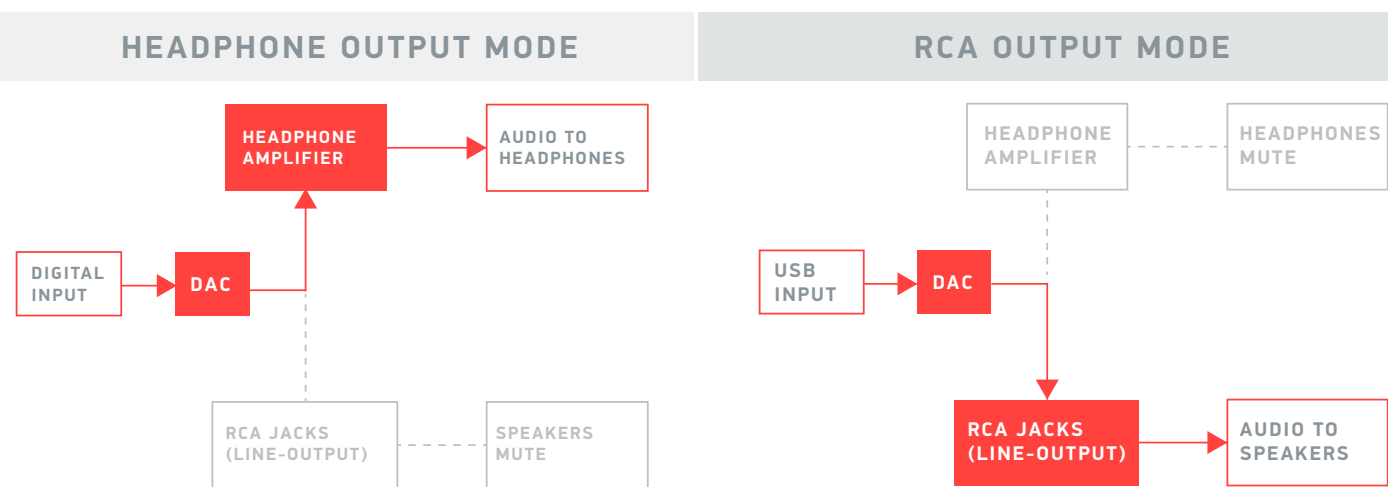
## Inputs

Element IV accepts digital input via USB or S/PDIF (optical). Press the rear mode button to toggle between USB or optical input.

## Outputs

Element IV provides headphone output and RCA Preamp Outputs. Press the tactile Volume knob button to toggle between output modes. Only one output is active at a time. Volume is adjustable in either mode, and saved to memory for easy transitions.

Pressing an input or output button displays the current mode on the screen.



## USB Cables

Element IV ships with a 3ft (1m) USB Type C to A cable equipped with a ferrite core for optimal jitter and noise rejection.

Longer cables can be used, but may increase jitter or compromise connection quality. If you must use a longer USB cable, we strongly encourage the following practices:

- 1) Transfer the detachable ferrite from your JDS Labs cable to your new cable. Use the exact same position on the new cable.
- 2) For runs longer than 6ft, use a USB hub and two 6ft cables (one 6ft cable to the hub, and the other 6ft cable to your DAC). The hub will act as a signal repeater.

# Listening Tips

---

Set sampling rate to the highest integer multiple of your music collection. For example, use 192kHz for a collection of 48k and 192k audio files. Common streaming services and games tend to use 48kHz audio. Alternatively, you may install the optional XMOS drivers in Win 10/11 and use an ASIO capable app to achieve bitperfect sampling rate changes. Active sampling rate is displayed on Element IV's screen.

---

Element IV can amplify headphones to dangerously loud audio. Listen safely to conserve your hearing:  
[www.hearingloss.org](http://www.hearingloss.org)

---

# Operating Care

---

Element IV uses a high current power supply and runs warm to the touch. Avoid covering the top and sides.

---

To ensure an optimal noise floor, always position headphone amplifiers as far away as possible from wireless devices.

---

By default, Element IV disables host operating volume controls for maximum fidelity and plentiful D/A headroom. Note: Win 10/11 may still permit system level volume adjustments.

---

Element IV can be safely powered on 24/7.

---

# SETUP

## Computer Setup

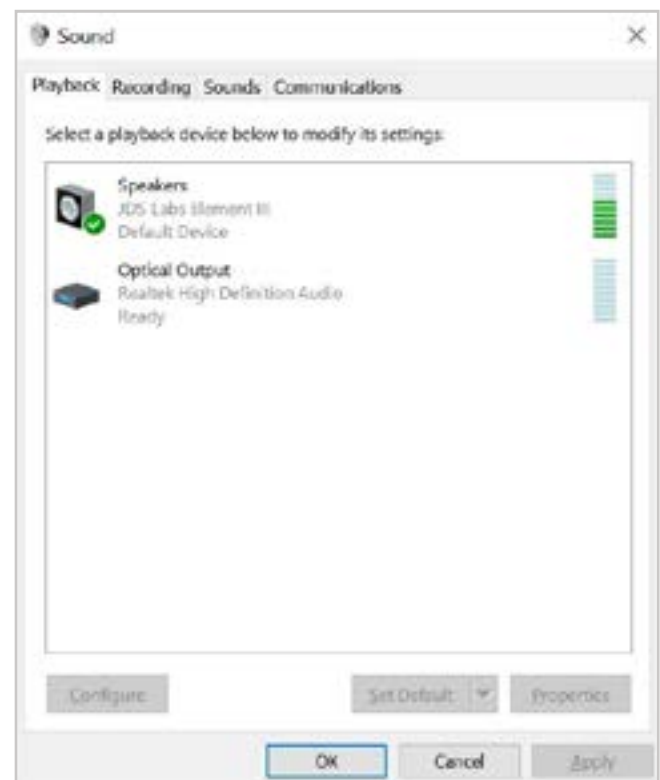
Element IV requires no drivers in Windows 10/11, macOS, Linux, and modern versions of iOS and Android. You may download optional drivers for Windows at [jdslabs.com/drivers](https://jdslabs.com/drivers) to enable all bitrates, adjust Buffer Length (latency), and to enable an ASIO endpoint. Be sure to select your new DAC as the default playback device:

### Windows 10/11

1. Right click the volume icon in your taskbar and click: **Open Sound Setting Sound Control Panel**
2. Click on “JDS Labs Element IV,” then choose “Set Default.”  
Please refer to Listening Tips for optimal properties

### macOS

Ensure JDS Labs audio device is selected from Audio Devices.



# Troubleshooting

## Amplifier does not turn on

**Cause:** Missing, damaged, or loose power adapter connection.

**Solution:** Please see [jdslabs.com/troubleshooting](https://jdslabs.com/troubleshooting)

## LEDs lash repeatedly, or screen does not respond

**Cause:** Element IV constantly self-monitors to automatically correct potential error states. Flashing LEDs or no screen activity indicate no response from the XMOS processor despite internal reset attempts. This may be caused by a power surge or extreme ESD event.

**Solution:** Please turn Element IV off, and then back on. If behavior persists, please reach out to [jdslabs.com/support](https://jdslabs.com/support)

## Element IV reboots during use

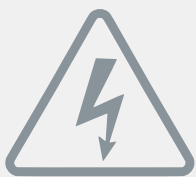
**Cause:** Element IV is designed to detect power or state errors and automatically recover.

**Solution:** Ensure clean power is provided. Try a different USB cable. Avoid placing near WiFi routers or other sources of excessive RF noise.

## No sound from headphones

**Cause:** Wrong mode or incorrect connectivity setup.

**Solution:** Please see the Connectivity section. Double check all cabling and volume levels.



## Power Adapters

**ATTENTION:** Incorrect power adapters can result in capacitor explosion hazards and device damage. Only use the power adapter included with your Element:

Type: AC-to-AC Transformer	Output Voltage: 17 VAC
Current: Minimum 1400mA	Connector: 2.1x55.mm (ID x OD)





Application for Council Directives 2004/108/EC, 2006/95/EC, 2002/95/EC. Conformity declared for EN55022:2011, EN611000-3-2, EN61000-3-3, EN55024-2



This equipment has been tested and found to comply with the limits for a Class B digital device, pursuant to part 15 of the FCC Rules.