



---

OPERATING INSTRUCTIONS | AMPLIFIERS

# ATOM AMP 2

## SUPPORT

ONLINE

---

[CONTACT@JDSSLABS.COM](mailto:CONTACT@JDSSLABS.COM)  
[JDSSLABS.COM/SUPPORT](https://www.jdslabs.com/support)

BY PHONE

---

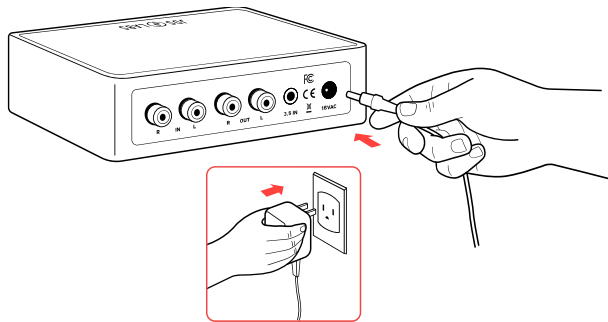
314-252-0936  
9:30AM-6PM CST,  
MONDAY THROUGH FRIDAY

BY MAIL

---

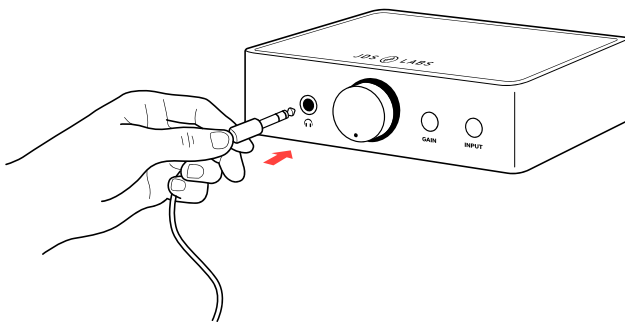
909 N BLUFF RD  
COLLINSVILLE, IL 62234  
UNITED STATES

# QUICK SETUP



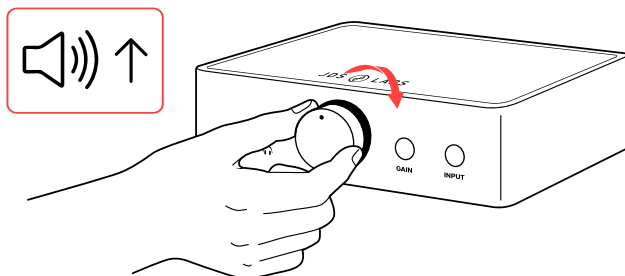
## STEP 01

Connect AC power adapter to rear power jack, then connect power adapter to wall outlet.



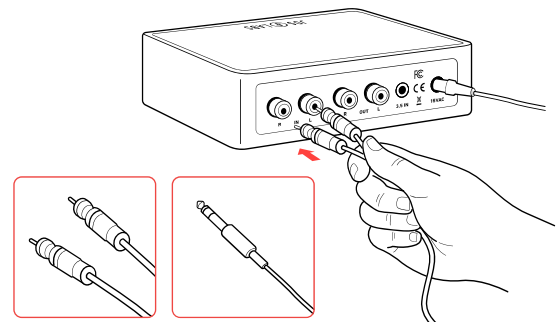
## STEP 03

Connect headphones to the front headphone output jack.



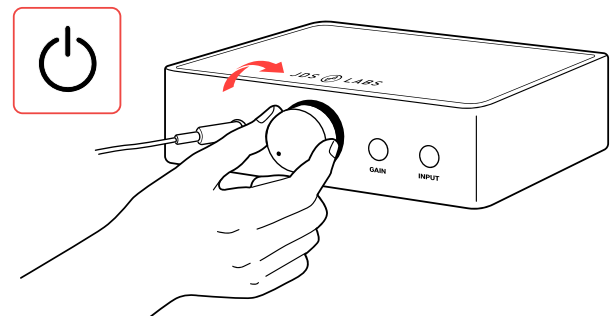
## STEP 05

Slowly raise the volume knob to an appropriate listening level. See listening tips on page 5.



## STEP 02

Connect a cable from your audio player to the RCA or 3.5mm input jack. Press the front 'INPUT' button to select 3.5mm input, or depress to select RCA.



## STEP 04

Turn the volume knob clockwise to power on.

# CONFIGURATION

## Connectivity

Atom Amp 2 provides two inputs. Press the 'INPUT' button inward to listen via 3.5mm, or leave unpressed to listen via RCA input.

Make sure Atom Amp 2 is set to low gain (unpressed = low gain, pressed = high gain) when using RCA output. The volume knob adjusts RCA output.

Maximum RCA Analog Input Level (High Gain):	2.0 VRMS (+8.24 dBu)
Maximum RCA Analog Input Level (Low Gain):	9.22 VRMS (+21.5 dBu)

## Setting Gain

Press the gain button to toggle between low or high gain amplification. Always use the lowest gain necessary. When the button is in its unpressed, outward position, Atom Amp 2 is set to low gain. Press the button inward to set high gain.

Switch to high gain only when you're unable to achieve desired listening volume at low gain.

## Source Safety

Atom Amp 2 is DC coupled for maximum signal quality and expects source signals with less than 4.5mV of DC offset. All JDS Labs DACs and consumer audio sources are safe to use.

Atom Amp 2 senses DC offset and automatically mutes its outputs when more than 60mV of DC is detected at high gain, or about 280mV at low gain. These detection levels are intended to protect your headphones from rare, catastrophic equipment or component level failures. The default detection tuning is not intended to trigger during minor DC offset.

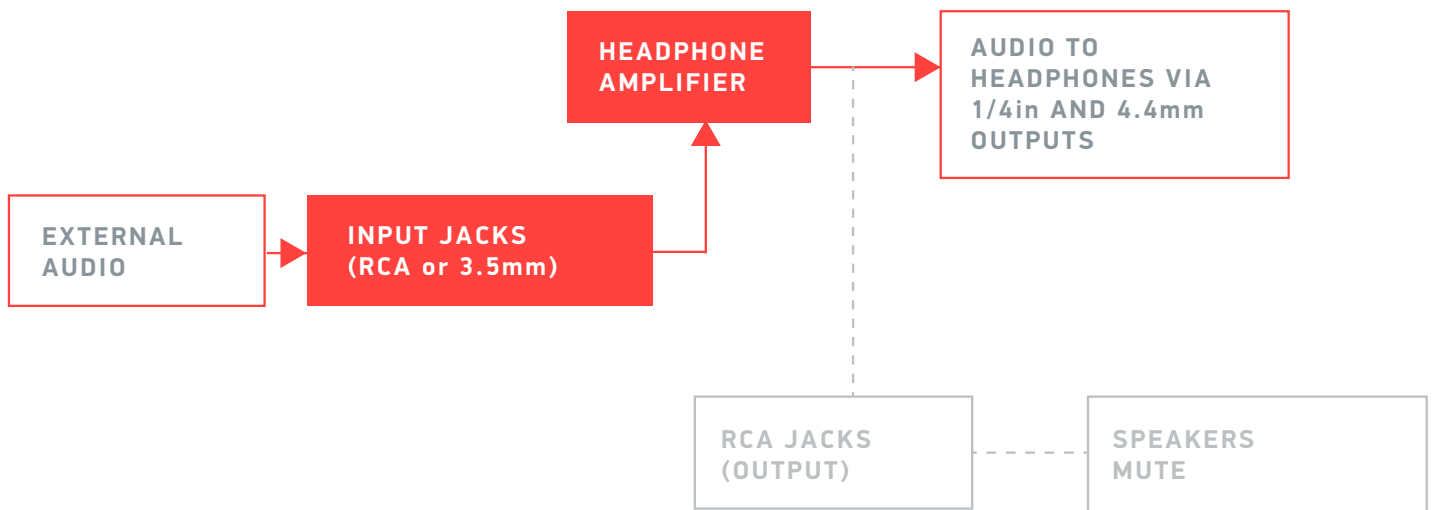
# Preamp-Output Functionality

RCA Preamp Outputs mute whenever headphones are plugged into the 1/4in (6.35mm) headphone jack. To mute RCA outputs when using the 4.4mm output, you may insert an unused 1/4" adapter into the 1/4in connector.

For example:

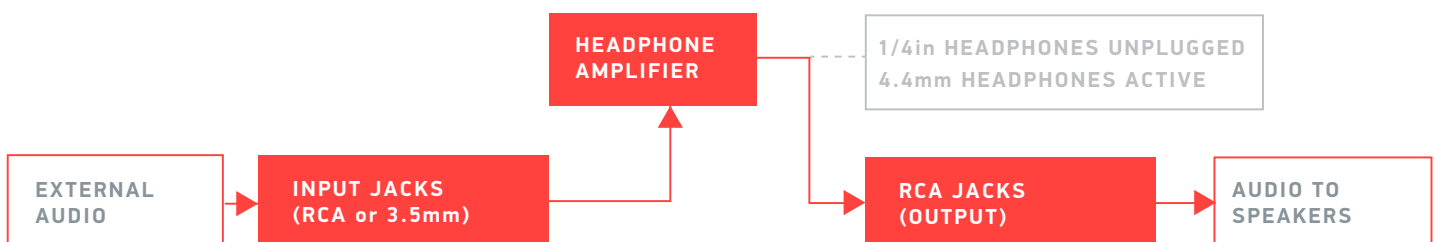


## 1/4in HEADPHONES CONNECTED



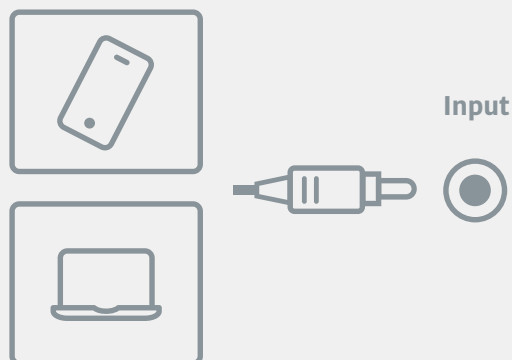
## 1/4in HEADPHONES DISCONNECTED

The volume knob adjusts RCA preamp output. Use Low Gain. Be sure to reduce volume level before connecting headphones!

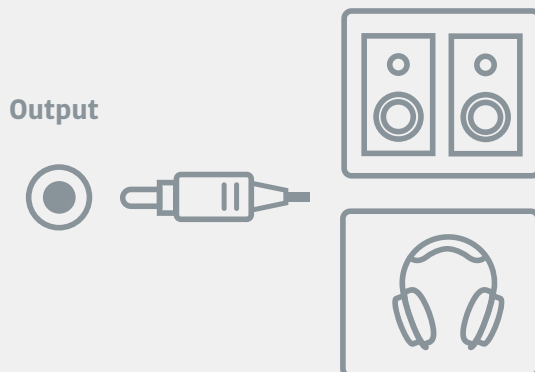


# Inputs vs Outputs

Your audio sources connect to your amp's input. These are common audio sources:



Your headphones or speakers connect to your amp's output.



## Listening Tips

Listen safely to conserve your hearing:  
[www.hearingloss.org](http://www.hearingloss.org)

To ensure an optimal noise floor, always position audio equipment as far away as possible from wireless devices.

## Operating Care

Atom Amp 2 uses a high current, linear power supply design and runs warm to the touch.

Atom Amp 2 can be safely powered on 24/7.

Do not turn knob beyond its limits or press buttons with excessive force.

Use gentle force when inserting or removing cables.

# Troubleshooting

## Amplifier does not turn on

**Cause:** Disconnected, damaged, or incorrect power adapter.

**Solution:** Please ensure AC adapter is firmly connected to power jack and wall outlet.

## Amplifier does not turn off

**Cause:** On rare occasion, mechanical relays can stick.

**Solution:** Tap or knock top of enclosure with moderate force to disengage.

## No sound, but light is on

**Cause:** Wrong input mode selected, or cable/source problem.

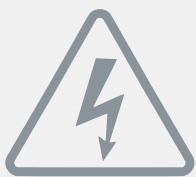
**Solution:** Input button must be in the outward position for RCA input, or in the inward (pressed) position for 3.5mm input. Try another audio source if cables and buttons are correct.

## Audio plays in only one channel

**Cause:** Bad cable or adapter, or incorrect source setup.

**Solution:** Try another input cable, and headphones with a native 1/4" connector.

For more help, please visit: [www.jdslabs.com/troubleshooting](http://www.jdslabs.com/troubleshooting)



## Power Adapters

**ATTENTION:** Incorrect power adapters can result in capacitor explosion hazards and device damage. Only use the power adapter included with your Atom Amp 2:

Type: AC-to-AC Transformer	Output Voltage: 15 or 16 VAC
Current: Minimum 500mA	Connector: 2.1x5.5mm (ID x OD)



Application for Council Directives 2004/108/EC, 2006/95/EC, 2002/95/EC. Conformity declared for EN55022:2011, EN611000-3-2, EN61000-3-3, EN55024-2



This equipment has been tested and found to comply with the limits for a Class B digital device, pursuant to part 15 of the FCC Rules.