



---

OPERATING INSTRUCTIONS | AMPLIFIERS

# EL AMP II+ BALANCED

## SUPPORT

ONLINE

---

[CONTACT@JDSLABS.COM](mailto:CONTACT@JDSLABS.COM)  
[JDSLABS.COM/SUPPORT](https://www.jdslabs.com/support)

BY PHONE

---

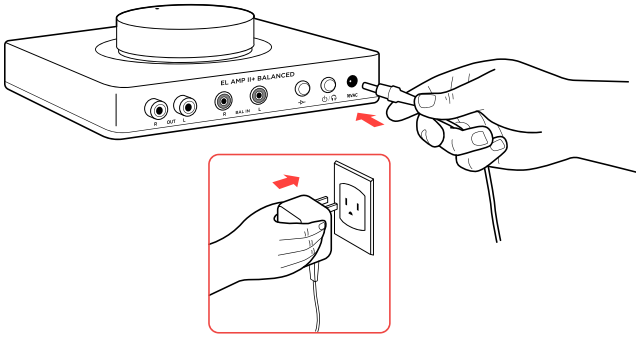
314-252-0936  
9:30AM-6PM CST,  
MONDAY THROUGH FRIDAY

BY MAIL

---

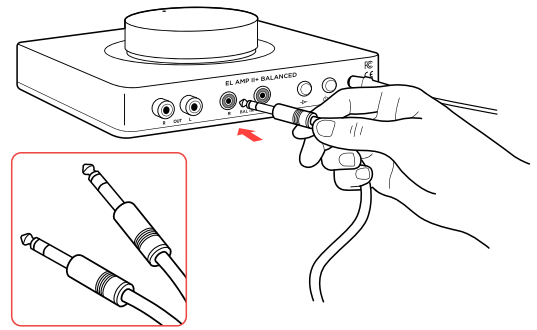
909 N BLUFF RD  
COLLINSVILLE, IL 62234  
UNITED STATES

# QUICK SETUP



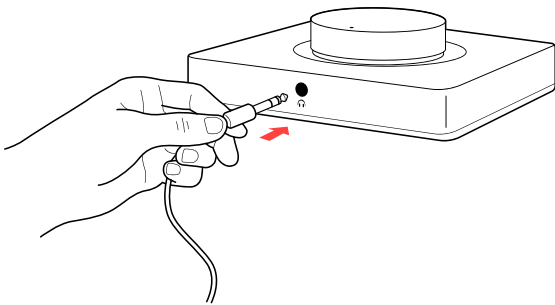
## STEP 01

Connect AC power adapter to rear power jack (16VAC), then connect to wall outlet.



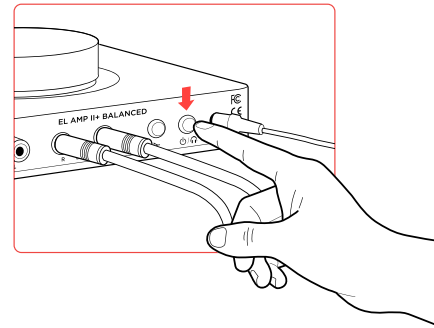
## STEP 02

Connect a cable from your audio player to the RCA Input jacks.



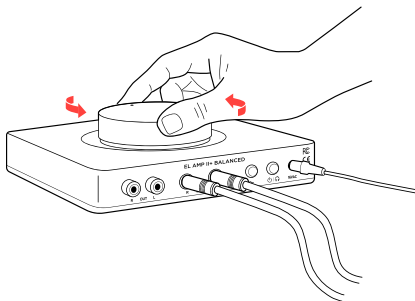
## STEP 03

Connect headphones to the front headphone output jack.



## STEP 04

Press the power button on the rear side of the amplifier. Keep volume low until music is playing.



## STEP 05

Slowly raise the volume knob to an appropriate listening level. See *Listening Tips* on page 5.

# CONFIGURATION

## Connectivity

EL AMP II+ Balanced accepts analog input via 1/4" TRS jacks.

RCA Line Output jacks are active while the amplifier is turned off, and automatically mute when the amplifier is turned on.

Maximum Balanced TRS Analog Input Level (High Gain):	4.2 VRMS (+14 dBu)
Maximum Balanced TRS Analog Input Level (Low Gain):	9.6 VRMS (+21 dBu)

## Setting Gain

Press the gain button to toggle between low or high gain amplification. Always use the lowest gain necessary.

Switch to high gain only when you're unable to achieve desired listening volume at low gain.

## Source Safety

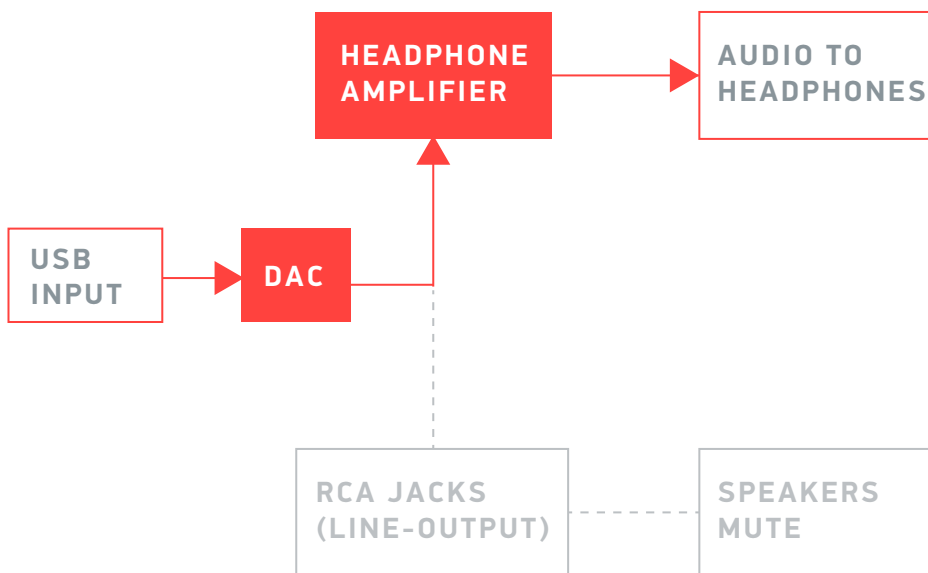
EL Amp II+ Balanced is DC coupled for maximum signal quality and requires an input source with < 4.5mV of DC offset for safe operation. All JDS Labs DACs and consumer audio sources are safe to use.

If you experience warm headphones, a loud pop when changing gain, or severe rustling sounds while adjusting volume, immediately power off and contact the manufacturer of your audio source to ensure DC offset is below 4mV.

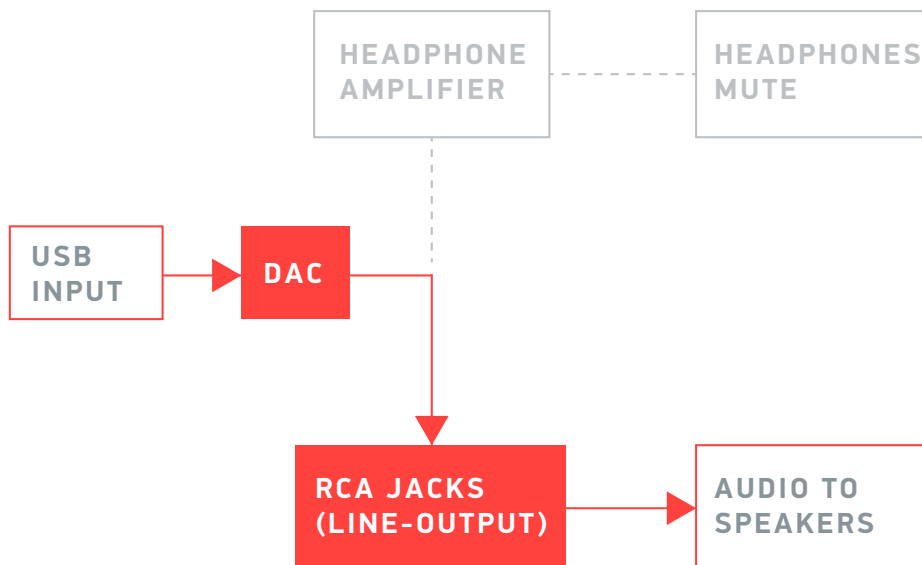
# Preamp-Output Functionality

EL Amp II+ Balanced provides headphone output and RCA Preamp Outputs. Hold the Power/ Mode button for at least 1 second to toggle between these modes. Only one mode is active at a time. Volume is adjustable in either mode.

## HEADPHONE OUTPUT MODE



## RCA OUTPUT MODE



# Listening Tips

---

EL Amp II+ can amplify headphones to dangerously loud audio. Listen safely to conserve your hearing:

[www.hearingloss.org](http://www.hearingloss.org)

To ensure an optimal noise floor, always position headphone amplifiers as far away as possible from wireless devices.

# Operating Care

---

EL AMP II+ uses a high current power supply and runs warm to the touch. Avoid covering the top and sides.

EL AMP II+ can be safely powered on 24/7. For maximum relay lifespan, cycle power at least once per month.

Do not lift the amplifier by knob, or turn knob beyond its limits.

Use gentle force when inserting or removing cables.

# Troubleshooting

## Amplifier does not turn on

**Cause:** Missing or loose power adapter connection.

**Solution:** Firmly connect AC adapter to 16VAC power jack.

## Internal LED flashes, then turns off

**Cause:** Wrong power adapter detected.

**Solution:** Please see Power Adapters section below.

## No sound in one channel

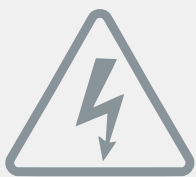
**Cause:** Bad cable, or incorrect computer settings.

**Solution:** Check balance settings; try another headphone or RCA cable. Some Mac OS X systems will pan audio to the Left channel upon initial connection of a DAC. User must restore balance to center.

## No sound from headphones

**Cause:** Wrong mode, or incorrect connectivity, or incorrect setup

**Solution:** Please see Connectivity page to toggle between Headphone or RCA Output. Check cabling.



## Power Adapters

**ATTENTION:** Incorrect power adapters can result in capacitor explosion hazards and device damage. Only use the power adapter included with your Element:

Type: AC-to-AC Transformer	Output Voltage: 16 VAC
Current: Minimum 1000mA	Connector: 2.1x55.mm (ID x OD)



Application for Council Directives 2004/108/EC, 2006/95/EC, 2002/95/EC. Conformity declared for EN55022:2011, EN611000-3-2, EN61000-3-3, EN55024-2



This equipment has been tested and found to comply with the limits for a Class B digital device, pursuant to part 15 of the FCC Rules.