



OPERATING INSTRUCTIONS | DIGITAL-TO-ANALOG CONVERTER

EL DAC II

SUPPORT

ONLINE

CONTACT@JDSELABS.COM
[JDSELABS.COM/SUPPORT](https://www.jdslabs.com/support)

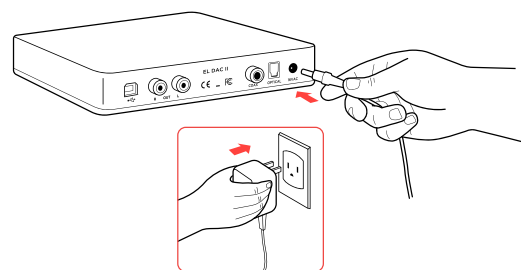
BY PHONE

314-252-0936
9:30AM-6PM CST,
MONDAY THROUGH FRIDAY

BY MAIL

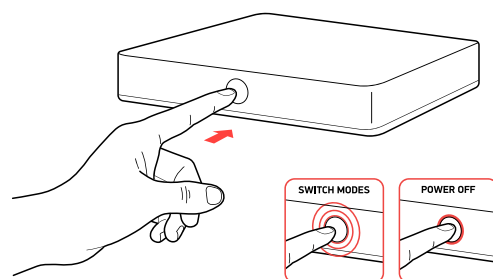
909 N BLUFF RD
COLLINSVILLE, IL 62234
UNITED STATES

QUICK SETUP



STEP 01

Connect AC power adapter to rear power jack, then connect to wall outlet



STEP 03

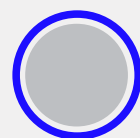
Touch button on front to power on, then:

- Tap mode button to select input
- Tap and hold to power off

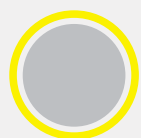
MODES



TOSLINK



USB



COAX

Your PC will only recognize the USB device while EL DAC II is set to USB mode, indicated by blue light.

CONFIGURATION

Connectivity

EL DAC II accepts three methods of digital input:

USB	16/44.1k thru 32/384kHz**
Coaxial S/PDIF	16/8kHz thru 24/192kHz*
TOSLINK	16/8kHz thru 24/192kHz*

Maximum RCA Output voltage is 2.0VRMS

* Many coax and optical sources are unable to reliably transmit at 192kHz.

** Windows 7 supports 24/192kHz maximum.

Listening Tips

For maximum signal fidelity, set the DAC to at least 24-bit audio and adjust digital volume slightly below 100% at your computer. Only control volume from your amplifier.

Listen safely to conserve your hearing: www.hearingloss.org

To ensure an optimal noise floor, always position audio equipment as far away as possible from wireless devices.

Operating Care

Use gentle force when touching the mode button, and when inserting or removing cables.

Set sampling rate to the highest integer multiple of your music collection. For example, use 176.4kHz for a collection of 44.1k or 88.2k or 176.4kHz files. Use 192kHz for a collection of 48k or 96k or 192k audio files. Alternatively, you may install the optional XMOS drivers in Win10 for exclusive WASAPI mode.

EL DAC automatically selects appropriate sampling rate in coaxial or optical modes.

SETUP

Computer Setup

EL DAC II requires no drivers in Windows 10, Mac OS, Linux, and modern version of iOS and Android. You may download drivers for Win7/8 from jdslabs.com/drivers. These drivers may optionally be installed in Win10 for WASAPI support. Be sure to select your new DAC as the default playback device:

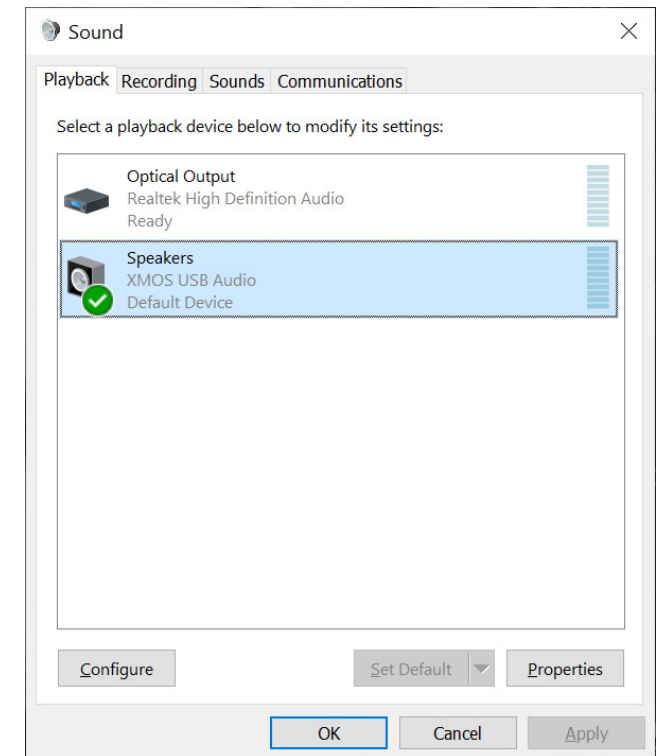
Windows 7/8/10

Right click the volume icon in your taskbar and choose Sound --> Playback. Click the XMOS or JDS Labs audio device, then choose "Set Default". For best experience, also configure Properties:

- Enhancements: Check "Disable all enhancements"
- Advanced: See Listening Tips

Mac OS X

Ensure JDS Labs audio device is selected from Audio Devices.



Troubleshooting

No USB device or “Failed to Play Audio”

Cause: USB Device is not initialized.

Solution: Tap mode button 3x to cycle through all modes and reset the USB device.

No sound in one channel

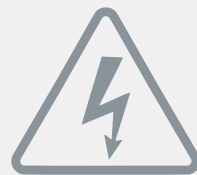
Cause: Bad cable, or incorrect computer settings.

Solution: Check balance settings; try another headphone or RCA cable. Some Mac OS X systems will pan audio to the Left channel upon initial connection of a DAC. User must restore balance to center.

Audio is muted after resuming from sleep or hibernate in Windows 10

Cause: Microsoft USB Audio 2.0 driver bug.

Solution: Install XMOS drivers, as per page 5.



POWER ADAPTERS

ATTENTION: Incorrect power adapters can result in capacitor explosion hazards and device damage. Only use the power adapter included with your EL DAC:

Type: AC-to-AC Transformer	Output Voltage: 15-16 VAC
Current: Minimum 500mA	Connector: 2.1x55.mm (ID x OD)